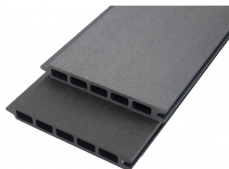
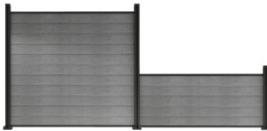
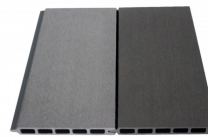
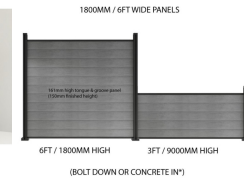
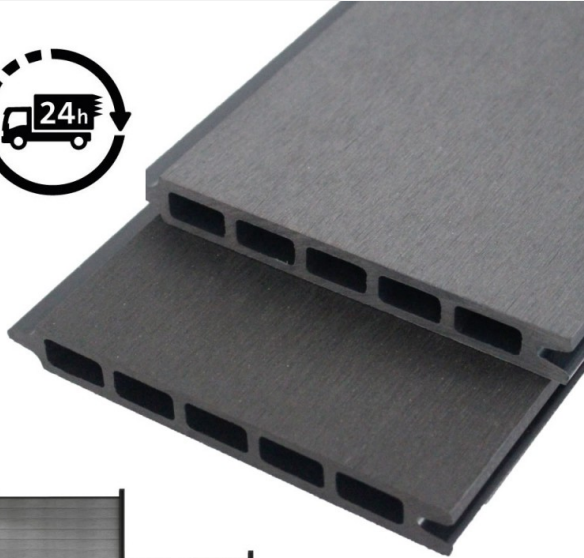


Composite Fence Slats 1800mm / 6ft - Anthracite / Light Grey - Composite Tongue & Groove Fence Panels Slats

£14.90 £11.90



This product is the individual composite boards - if you prefer to order everything in a [complete composite fencing kit click here.](#)

[Long lasting, Maintenance Free Composite Fencing] Alternative to traditional timber fence panels which (no need to stain or seal) & Mould / moisture resistant & splinter resistant)

[Double sided/Reversible Composite Boards] Gives that modern clean look on both sides of the fence whether split between a neighbour or creating a garden screen/balcony surround - composite fencing will be sure to look great from any angle

[Ease of install Tongue & Groove Composite Panels] 6ft /1800mm wide Tongue & Groove composite fence panels simply drop and slot in between the aluminium upright post channels, locking into place on top of one another - no need for exposed screws or nail heads giving a clean, minimalist look

[Aluminium Posts for Surface fixing or concreting in] Supplied complete with matt Black powder coated aluminium posts with options of base plate for surface fixing onto existing floors such as concrete, patios, decks OR longer posts for concreting straight in/sunk in the ground (2400mm for 6ft height / 1200mm for 3ft high posts)

Composite Fence Panel Technical Specs

Board Length: 6ft / 1800mm

Board Width: 161.5mm (150mm finished width once the tongue/groove is locked into place ie. 3ft/900mm fence = 5 boards/slats - 6ft/1800mm fence = 11 boards/slats)

Board Thickness: 20mm reversible both sides

Each board weighs approximately 4.1kg

Fixing post centres 1834mm +/-5mm. Can be cut shorter for shorter spans between posts

Material: Polyethelyne

Fire classification of construction products: BS EN 13501-1 Class B

[DOWNLOAD INSTALLATION INSTRUCTIONS / MANUAL](#)

NOTE: due to manufacturing tolerances with regards to batch variation, we recommend ordering all material for a project at the same time, from the same batch as we cannot be held responsible for any variation that occurs between batches.