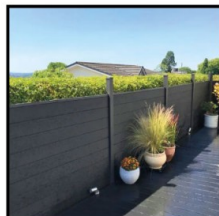
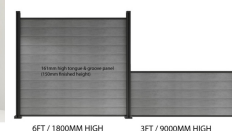


Composite Fencing / Fence Panels c/w Aluminium Posts - 3ft/900mm - 6ft 1800mm - Composite Tongue & Groove Fence Panels Slats

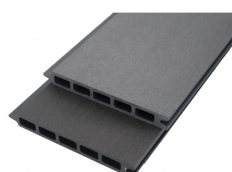
£179.40 £128.40



1800MM / 6FT WIDE PANELS



(BOLT DOWN OR CONCRETE IN*)



This product is sold in complete kit format including everything you need for the selected kit size including specified number of posts, channels, composite slats etc. For bespoke projects or if you prefer to order [individual components such as slats, posts, or composite panels](#) - [click here](#).

[Long lasting, Maintenance Free Composite Fencing] Alternative to traditional timber fence panels which (no need to stain or seal) & Mould / moisture resistant & splinter resistant)

[Double sided/Reversible Composite Boards] Gives that modern clean look on both sides of the fence whether split between a neighbour or creating a garden screen/balcony surround - composite fencing

will be sure to look great from any angle

[Ease of install Tongue & Groove Composite Panels] 6ft /1800mm wide Tongue & Groove composite

fence panels simply drop and slot in between the aluminium upright post channels, locking into place on top of one another - no need for exposed screws or nail heads giving a clean, minimalist look

[Aluminium Posts for Surface fixing or concreting in] Supplied complete with matt Black powder coated aluminium posts with options of base plate for surface fixing onto existing floors such as concrete, patios, decks OR longer posts for concreting straight in/sunk in the ground (2400mm for 6ft height / 1200mm for 3ft high posts)

Composite Fence Panel Technical Specs

Board Length: 6ft / 1800mm

Board Width: 161.5mm (150mm finished width once the tongue/groove is locked into place ie. 3ft/900mm fence = 5 boards/slats - 6ft/1800mm fence = 11 boards/slats)

Board Thickness: 20mm reversible both sides

Each board weighs approximately 4.1kg

Fixing post centres 1834mm +/-5mm. Can be cut shorter for shorter spans between posts

Material: Polyethelyne

Fire classification of construction products: BS EN 13501-1 Class B

Aluminium upright posts technical specs

Size: 68mm x 68mm x various heights - 900mm / 1800mm for surface fixing with base plate or 1200mm / 2400mm for concrete in (300mm & 600mm below ground respectively)

Colour: Matt Black Powder Coated comes complete with PVC plastic post top cap

c/w channels on 3 sides for continuous inline fencing or 90° corner + 1 infill trim for the unused groove per post

Can be cut with a mitre/chop saw to the desired height should you opt for a 4ft or 5ft fence

U Chanel for header / footer on between posts in matt black to match + 4 L brackets + 12 x self drilling screws to suit

**If above ground/surface fixing, comes with a 120mm x 120mm base plate, PVC plastic base plate cover
, 1 x self drilling screw**

If below ground/concrete in - 300mm extra on the 900mm posts ie. 1200mm total and 600mm extra on the 1800mm posts ie. 2400mm

Per 1800mm section/panel you will get:

11 x composite fence boards 1800mm x 20mm

1 x aluminium extruded fence posts + 1 infill trim

******1 x END POST IF YOU SELECT THE ADD ON END POST***

2 x aluminium U channel header & footer bars

1 PVC post cap

4 x L bracket aluminium post connectors

12 x stainless steel fixings

******1 x 120mm x 120mm surface mount plate if above ground installation selected***

[DOWNLOAD INSTALLATION INSTRUCTIONS / MANUAL](#)

NOTE: due to manufacturing tolerances with regards to batch variation, we recommend ordering all material for a project at the same time, from the same batch as we cannot be held responsible for any variation that occurs between batches.