

Louvre Vent 500mm x 300mm for Security Personnel Pedestrian Door - Industrial Grade Exterior Outdoor Security Door for Garage, Warehouse, Shed, Industrial Unit, Lockup, Shed, Shipping Container, Farm Barn

£71.28 £53.40

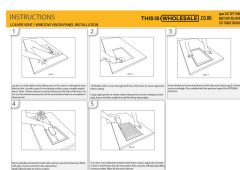
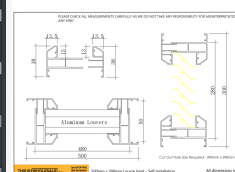
OPTIONAL ADD ONS SELF INSTALLATION REQUIRED



OPTIONAL ADD ONS SELF INSTALLATION REQUIRED



OPTIONAL ADD ONS SELF INSTALLATION REQUIRED



CUSTOM SIZES, GLAZING, POWDER COATING, STYLES FOR DOORS IN BULK
(CONTACT US FOR DETAILS)

Louvre Vent size is 500mm x 300mm - SELF INSTALLATION / CUTTING REQUIRED (these are supplied with the door only for the customer to install) see instructions below for details. This louver vent is not pre-installed by ourselves and is only supplied with the door for the customer / installer to fit. Requires a competent and experienced installer, we accept no liability for mis-installation / mis-cutting or damage to product during installation. Frame powder coated both sides and will be sent the same colour as the door selected. Note, 150mm clearance must be left around all 4 sides of the door.

- RAL 9003 WHITE (painted both sides in/out)
- RAL 7016 ANTHRACITE GREY (painted both sides in/out)
- RAL 9005 JET BLACK (painted both sides in/out)
- RAL 6007 JUNIPER GREEN (painted both sides in/out)
- RAL 5005 SIGNAL BLUE (painted both sides in/out)

PLEASE NOTE - THIS IS ONE STANDARD SIZEDSize: 500mm x 300mm - ITEM IS RECOMMENDED TO BE MEASURED, ORDERED AND INSTALLED BY A SUITABLE EXPERIENCED PROFESSIONAL AS WE DO NOT TAKE ANY LIABILITY FOR INCORRECT MEASUREMENTS. FULL TECHNICAL DRAWING WITH ALL DIMENSIONS IS BELOW & INSTALLATION INSTRUCTIONS.

[DOWNLOAD PDF TECHNICAL DRAWING / DIMENSIONS](#)[DOWNLOAD INSTALLATION INSTRUCTIONS / MANUAL](#)

NOTE: Due to manufacturing tolerances with regards to batch variation, we recommend ordering all coloured/powder coated doors for a project at the same time, from the same batch as we cannot be held responsible for any variation that occurs between batches.

Must be installed by a competent persons, we are not able to train, teach any DIY enthusiast how to fit a door correctly. Whilst its not a difficult job, each individuals competency and skill set varies and thus professional knowledge is advised to fit this product correctly, safely and securely for normal operation.