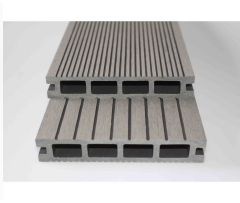
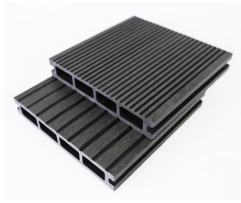
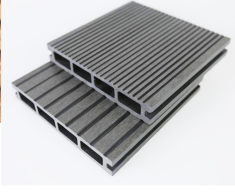
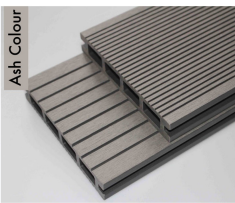
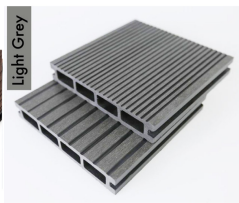
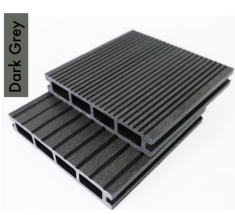
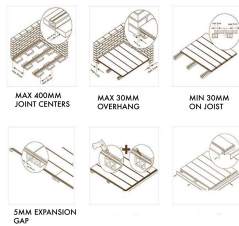
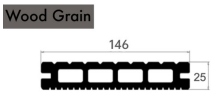
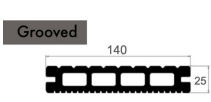


SAMPLE Composite Decking - Grey / Black / Ash / Brown / Anthracite Grey Wood Grain Effect 3m - Plastic Decking PVC Decking WPC Decking Hollow Garden Outdoor Exterior Decking Boards

£0.99



SAMPLE ONLY

[LOOKING TO PURCHASE BY THE SQUARE METER - CLICK HERE IF YOU KNOW THE NUMBER OF SQUARE METRES YOU REQUIRE INSTEAD.](#)

text phone 02920 099 098
sales@onlineb2b.co.uk | <https://onlineb2b.co.uk/>

A double sided reversible hollow composite grey board with a low risk of slip groove surface on both sides (5mm grooves one face / 17mm grooves on the reverse), and non-stain, complete with concealed hidden fixings for a barefoot friendly surface (Barefoot-friendly; slip & splinter resistant) looking contemporary and easy to install / clean as well as considerably longer lasting, low/no maintenance alternative to traditional timber decking (no need to stain or seal) & Mould / moisture resistant

Board Length: 3000mm

Board Width: 140mm Lined Grooved / 146mm Wood Grain Effect

Board Thickness: 25mm

Each board weighs approximately 8.1kg and is sold in packs of 5 (pack weight 40kg) - Price is per board, sold in packs/multiples of 5 ie. 5, 10, 15, 20 etc hence adding 25 to your shopping cart will be 25 boards, 5 packs of 5 boards

Fixing joist center span: (400mm / 90" recommended max)

Material: Polyethylene

Fire classification of construction products: BS EN 13501-1 Class B

Premium secret hidden concealed stainless steel fixing clips sold separately for a barefoot friendly surface (not cheap plastic ones which rust, crack, move, with stainless steel concealed hidden decking board fixing clips require 4mm - 4.5mm screw sold separately) - add on below - we recommend 20 per square m (8 per board)

Approx 2.3 Boards is 1 sq m. **This is APPROX**

Each 3m board covers 0.42 sq m.

You need 7.2 linear metres to cover 1 single square m.

1 Square m requires to x 2.5 boards approx.

Simply multiply the number of square m you require by 2.5, So if you require a composite plastic decked terrace area to cover 3m x 3m = 9 sq m 2.5 = 22.5 boards in total.* We always recommend adding on 10% extra for cuts/wastage etc. so, in this case, would recommend 25 boards as we can't be held liable for shortages in ordering/extra delivery charges or variations in colour from batch to batch due to the manufacturing process.

Note: To allow for expansion and maintenance, please be sure to keep a 30mm expansion gaps between all sides of your deck and any obstructions such as walls, fences, etc.

text: phone 07920 099 098
sales@onlineb2b.co.uk | <https://onlineb2b.co.uk/>